

WEEKLY NEWSLETTER

DECEMBER 12, 2023



1.



FARMER'S MARKET

GRADE 4 & 5 STUDENTS ARE INVITED TO BRING CASH ON DEC 18 - 21ST IN ORDER TO GO SHOPPING AT OUR GRADE 8 AGRICULTURE FARMER'S MARKET. STUDENTS CAN PURCHASE COOKBOOKS, HERBAL SALT, BODY BUTTER, PICKLES, PESTO, SOAP AND HOLIDAY GARLANDS.

CLICK [HERE](#) FOR MORE INFORMATION!

Farmer's
MARKET

WINTER CONCERT

2.

JOIN US FOR THE ANNUAL WINTER CONCERT ON 12/19 AT 10 AM IN THE MPR, FEATURING THE FOLLOWING GROUPS:

Beginning Band (Select 5th Grade Students) ● 5th Grade Homerooms ● Junior Choir (Select 4th & 5th Grade Students) ● Senior Choir (Select 6th-8th Grade Students) ● 4th Grade Homerooms ● Jazz Ensemble

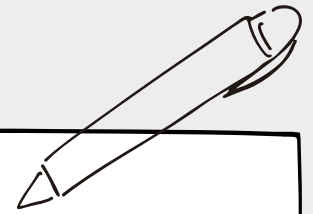
Due to the number of students participating and limited space in the MPR, families are limited to two tickets per student ● Ticket sheet will be sent home to every student at rehearsal on Mon. 12/18 and must be returned upon entry to the concert ● Doors open at 9:45 AM

CLICK [HERE](#) FOR MORE INFORMATION



3.

NOTEWORTHY



RFH Info for Gr 8 Students:
[Parent Tours](#) - click this link to register

Save the date of Jan. 18th for the
RFH 8th Grade Curriculum Night

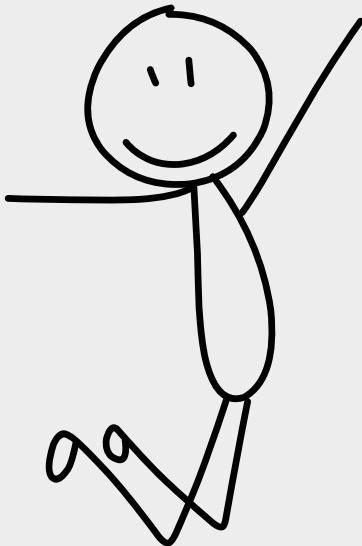
[Mandatory Diploma Form](#) - Class of 2024, please complete ASAP

[HOLIDAY GIFTS ISLIDES FINAL DAY!](#)

[SGA Clothing Drive](#)

4.

DAWG DATES TO SAVE



12/14 - Parent Academy

12/19 - FD Winter Concert at 10 AM;
Report Cards posted in Parent Portal

12/20 - Concert Snow Date

12/21 - All Class Holiday Celebrations

12/22 - 1 PM Dismissal;
Holiday Sing Along

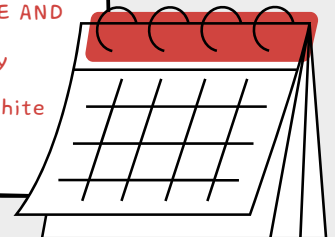
HOLIDAY SPIRIT WEEK

December 18th- Holiday Accessory Day
(socks, necklaces, headbands etc)

December 19th-Holiday Dress up and Shine Day
(Holiday concert attire add a little glitter, SPARKLE AND SHINE!)

December 20th-Holiday sweater/sweatshirt day
(wear a festive shirt/sweater or sweatshirt)

December 21st- 1st day of Winter, wear winter white
December 22nd- PJ/Comfy Clothes Day



FOR MORE, VISIT THE
VIRTUAL BACKPACK

<https://www.rumsonschool.org/rumson/Forrestdale/>